

RAC1 + RAC2 Antibody (clone AT2G11)
Mouse Monoclonal Antibody
Catalog # ALS15730**Specification**

RAC1 + RAC2 Antibody (clone AT2G11) - Product Information

Application	WB, IHC-P, E
Primary Accession	P63000
Reactivity	Human
Host	Mouse
Clonality	Monoclonal
Dilution	WB~~1:1000 IHC-P~~N/A E~~N/A

RAC1 + RAC2 Antibody (clone AT2G11) - Additional Information**Gene ID** 5879**Other Names**

Ras-related C3 botulinum toxin substrate 1, Cell migration-inducing gene 5 protein, Ras-like protein TC25, p21-Rac1, RAC1, TC25

Target/Specificity

By Western blot testing using recombinant proteins this antibody detects both RAC1 and RAC2.

Reconstitution & Storage

Can be stored at 4°C. For long term storage, aliquot and store at -20°C. Avoid repeated freezing and thawing cycles.

Precautions

RAC1 + RAC2 Antibody (clone AT2G11) is for research use only and not for use in diagnostic or therapeutic procedures.

RAC1 + RAC2 Antibody (clone AT2G11) - Protein Information**Name** RAC1 ([HGNC:9801](#))**Synonyms** TC25**Function**

Plasma membrane-associated small GTPase which cycles between active GTP-bound and inactive GDP-bound states. In its active state, binds to a variety of effector proteins to regulate cellular responses such as secretory processes, phagocytosis of apoptotic cells, epithelial cell polarization, neurons adhesion, migration and differentiation, and growth-factor induced formation of membrane ruffles (PubMed:1643658, PubMed:22843693, PubMed:23512198)

target="_blank">23512198, PubMed:28886345). Rac1 p21/rho GDI heterodimer is the active component of the cytosolic factor sigma 1, which is involved in stimulation of the NADPH oxidase activity in macrophages. Essential for the SPATA13- mediated regulation of cell migration and adhesion assembly and disassembly. Stimulates PKN2 kinase activity (PubMed:9121475). In concert with RAB7A, plays a role in regulating the formation of RBs (ruffled borders) in osteoclasts (PubMed:1643658). In podocytes, promotes nuclear shuttling of NR3C2; this modulation is required for a proper kidney functioning. Required for atypical chemokine receptor ACKR2-induced LIMK1-PAK1-dependent phosphorylation of cofilin (CFL1) and for up-regulation of ACKR2 from endosomal compartment to cell membrane, increasing its efficiency in chemokine uptake and degradation. In neurons, is involved in dendritic spine formation and synaptic plasticity (By similarity). In hippocampal neurons, involved in spine morphogenesis and synapse formation, through local activation at synapses by guanine nucleotide exchange factors (GEFs), such as ARHGEF6/ARHGEF7/PIX (PubMed:12695502). In synapses, seems to mediate the regulation of F-actin cluster formation performed by SHANK3. In neurons, plays a crucial role in regulating GABA(A) receptor synaptic stability and hence GABAergic inhibitory synaptic transmission through its role in PAK1 activation and eventually F-actin stabilization (By similarity). Required for DSG3 translocation to cell-cell junctions, DSG3-mediated organization of cortical F-actin bundles and anchoring of actin at cell junctions; via interaction with DSG3 (PubMed:22796473). Subunit of the phagocyte NADPH oxidase complex that mediates the transfer of electrons from cytosolic NADPH to O₂ to produce the superoxide anion (O₂⁻) (PubMed:38355798).

Cellular Location

Cell membrane; Lipid-anchor; Cytoplasmic side. Melanosome. Cytoplasm. Cell projection, lamellipodium {ECO:0000250|UniProtKB:P63001}. Cell projection, dendrite {ECO:0000250|UniProtKB:P63001}. Synapse {ECO:0000250|UniProtKB:Q6RUV5} Nucleus. Note=Inner surface of plasma membrane possibly with attachment requiring prenylation of the C-terminal cysteine (PubMed:1903399). Identified by mass spectrometry in melanosome fractions from stage I to stage IV (PubMed:17081065). Found in the ruffled border (a late endosomal-like compartment in the plasma membrane) of bone-resorbing osteoclasts. Localizes to the lamellipodium in a SH3RF1-dependent manner (By similarity). In macrophages, cytoplasmic location increases upon CSF1 stimulation (By similarity) Activation by GTP-binding promotes nuclear localization (PubMed:12551911). {ECO:0000250|UniProtKB:P63001, ECO:0000250|UniProtKB:Q6RUV5, ECO:0000269|PubMed:12551911, ECO:0000269|PubMed:17081065, ECO:0000269|PubMed:1903399}

Tissue Location

Isoform B is predominantly identified in skin and epithelial tissues from the intestinal tract. Its expression is elevated in colorectal tumors at various stages of neoplastic progression, as compared to their respective adjacent tissues

Volume

50 µl

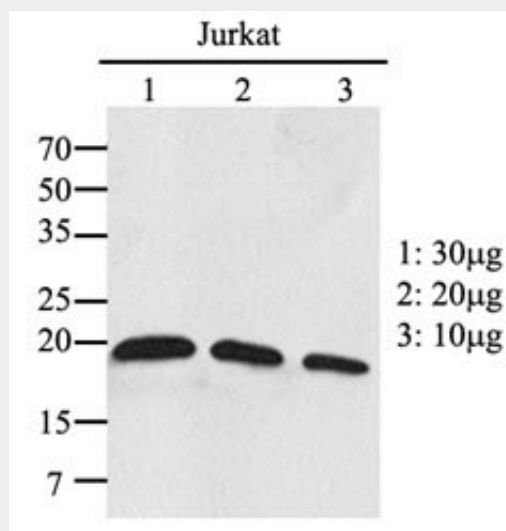
RAC1 + RAC2 Antibody (clone AT2G11) - Protocols

Provided below are standard protocols that you may find useful for product applications.

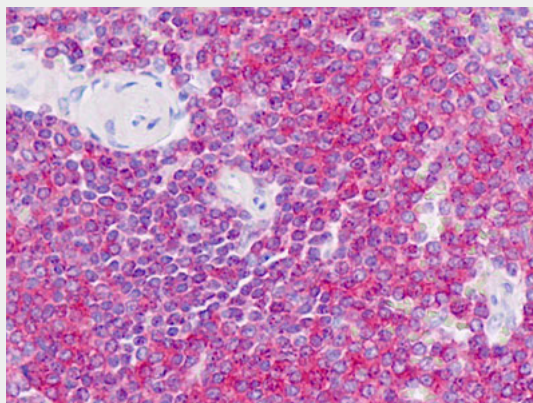
- [Western Blot](#)
- [Blocking Peptides](#)

- [Dot Blot](#)
- [Immunohistochemistry](#)
- [Immunofluorescence](#)
- [Immunoprecipitation](#)
- [Flow Cytometry](#)
- [Cell Culture](#)

RAC1 + RAC2 Antibody (clone AT2G11) - Images



Western Blot: The extracts of Jurkat were resolved by SDS-PAGE, transferred to PVDF membrane and...



Anti-RAC1/RAC2 antibody IHC staining of human spleen.